



GAMSAT

www.gamsat.acer.edu.au

Graduate Australian Medical School Admissions Test
Information booklet 2011 – version 2

Deadline for registration – 5.00pm AEDT 2 February 2011
Test date – 26 March 2011

Australian Council for Educational Research



This *Information Booklet* covers everything you need to know about registering for GAMSAT 2011.

If you have any queries about the registration process, you may contact the GAMSAT Office during normal business hours. The Office will not answer queries relating to the content of the test.

GAMSAT Office at ACER:

Email: gamsat@acer.edu.au

Web: www.gamsat.acer.edu.au

Phone: (03) 8508 9097

Postal address: Private Bag 55
Camberwell VIC 3124

Email is the principal means of communication concerning GAMSAT registration, Admission Tickets and results.

Candidates must provide a current valid email address which will be maintained during the registration, test and reporting cycle.

Sometimes personal emails don't make it through our spam filters, so if we don't respond within a week, please resend the message.

Note: candidates who provide an email address that is hosted by Hotmail.com or Yahoo.com are advised that some procedures implemented by these providers may result in some email messages not being accepted, or being flagged as spam. You are advised to use a different email service provider for the purposes of GAMSAT registration, or to put gamsat@acer.edu.au in your address book to ensure emails from the GAMSAT Office are not regarded as junk email.

ACER has made every effort to ensure the accuracy of the information provided in this Information Booklet. However, you are advised to consult the GAMSAT and university websites for information updates.

Contents

1	Background The Graduate-Entry Programs Admission to a Graduate-Entry Program	2
2	What is GAMSAT? The Graduate Australian Medical School Admissions Test (GAMSAT) Structure and Content Equity and Fairness Use of Personal Information	3
3	Registering for GAMSAT Test Date and Registration Deadline Test Centres Registration Payment Applying for Special Testing Conditions Refund Policy Communicating with the GAMSAT Office	6
4	Test Centre Procedures and Regulations Admission Ticket Reporting to the Test Centre Identification on the Test Day Permitted Testing Aids Timing and Order of the Tests Answer Sheets Penalties for Unethical Behaviour Breaches of Copyright	8
5	Preparing for GAMSAT GAMSAT Practice Materials Test-taking Strategy for Sections I and III	10
6	GAMSAT Results The GAMSAT Scores Validity of Results Appeals	11
7	Application for Admission to the Graduate-Entry Programs	12

Background

1.1 The Graduate-Entry Programs

Ten medical schools – at the Australian National University, Deakin University, Flinders University, Griffith University, the University of Melbourne, Monash University, the University of Notre Dame Australia (Fremantle and Sydney), the University of Queensland, the University of Sydney and University of Wollongong – admit graduates into a four-year medical degree program. The University of Western Australia accepts graduates into a four year seven month program (equivalent to five academic years).

The remaining Australian medical schools offer an undergraduate program of five or six years' duration.

Two dental schools – at the University of Sydney and the University of Melbourne, admit graduates into a four-year graduate-entry program. The Faculty of Pharmacy at The University of Sydney offers a two-year Master of Pharmacy. The Melbourne Graduate School of Science at the University of Melbourne offers a four-year Doctor of Optometry.

The graduate-entry programs provide opportunities for medical, dental, optometry and pharmacy training to a wide range of graduates who have made a mature decision to commit to a demanding profession. By extending the selection to graduates of the humanities and social sciences as well as the physical and biological sciences, it is expected that students with a diverse range of interests, skills and talents will be represented in each school. There is no preference or advanced standing offered to applicants with particular first degrees. The programs are open to graduates of any field who are able to meet the selection criteria. Please note though that the University of Melbourne requires satisfactory completion of approved science subjects prior to entry.

Each of the schools has defined its own goals for the graduate-entry programs; they share features in common but the emphasis differs. All programs aim to build on the diverse interests and talents of the graduates admitted. Graduates of the programs will have the skills and knowledge to practise effectively as medical interns under supervision, or in the case of dental and optometry graduates, to practise effectively as general practitioners, and to develop their careers through subsequent entry into further vocational training. Graduates of the Master of Pharmacy will be able to practise as pharmacists after a compulsory pre-registration period.

In recognition of the fact that medical knowledge continues to expand and that doctors, dentists, pharmacists and optometrists will continue to learn

throughout their lives, self-directed learning is a major focus of the graduate-entry programs. Effective communication with patients and colleagues is seen as crucial. Teamwork and an awareness of community concerns are stressed.

1.2 Admission to a Graduate-Entry Program

Applicants are selected for admission into the graduate-entry **medical** and **dental** programs on the basis of three criteria. These are:

- | |
|-------------------|
| • Bachelor degree |
| • GAMSAT score |
| • Interview |

The universities may differ in their weighting of performance on each of the criteria.

Exception: The University of Queensland no longer interviews applicants for the graduate program. Entry to the dental program at the University of Melbourne does not require an interview. For information on selection into optometry at the University of Melbourne please refer to the website <http://graduate.science.unimelb.edu.au/>. Selection for medicine, dentistry and optometry at the University of Melbourne is also based on satisfactory completion of approved science subjects. Details are available from the website <http://www.unimelb.edu.au/>.

Selection into the **Master of Pharmacy** program is based on four criteria; Bachelor degree, GAMSAT score, seven essential prerequisites (completed within the previous five years) and a satisfactory score in the Pharmacy Case Study Scenario.

More specific information can be obtained by contacting the schools directly and by referring to the 2012 *Graduate Admission Guide*, which will be available on the website in May 2011. In the meantime, the previous version of the *Admission Guide* is available on the GAMSAT website: www.gamsat.acer.edu.au.

Applicants who completed their Bachelor degrees more than ten years ago are advised to check their eligibility with their preferred schools before registering for GAMSAT.

Each University may have its own additional admission policies (which may include policies on prior or current studies, enrolment irregularities and/or transfers). To confirm if there are additional policies, contact the schools to which you intend to apply.

What is GAMSAT?

2.1 The Graduate Australian Medical School Admissions Test (GAMSAT)

The Graduate Australian Medical School Admissions Test (GAMSAT) has been developed by the Australian Council for Educational Research (ACER) in conjunction with the Consortium of Graduate Medical Schools to assist in the selection of students to participate in the graduate-entry programs.

GAMSAT is available to any student who has completed a Bachelor degree, or who will be in the penultimate (second-last) or final year of study for a Bachelor degree, at the time of sitting the test.

GAMSAT is designed to assess the capacity to undertake high level intellectual studies in a demanding course. The test is offered once a year only.

GAMSAT evaluates the nature and extent of abilities and skills gained through prior experience and learning, including the mastery and use of concepts in basic science as well as the acquisition of more general skills in problem solving, critical thinking and writing.

If your first degree is in a non-scientific field of study you can still sit GAMSAT and succeed in an application for admission to one of the graduate-entry programs. A science degree is not a prerequisite and academic excellence in the humanities and social sciences is encouraged and recognised. However, it must be stressed that success in GAMSAT is unlikely without knowledge and ability in the biological and physical sciences, however this is acquired (see page 5).

2.2 Structure and Content

The purpose of GAMSAT is to assess your ability to understand and analyse material, to think critically about issues and, in the case of the Written Communication section, to organise and express your thoughts in a logical and effective way. GAMSAT questions are based on material drawn from a variety of sources. They typically require candidates to read and think about a passage of writing, to interpret graphical displays of information, to use mathematical relationships and to apply reasoning skills to tables of data. Problem solving is a major focus of the test.

The test is divided into three sections designed to assess performance in the areas of:

- I Reasoning in Humanities and Social Sciences
- II Written Communication
- III Reasoning in Biological and Physical Sciences

Since problem-based learning techniques are central to the graduate-entry programs, GAMSAT is constructed with a major focus on the assessment of problem-solving ability across a wide range of subject areas.

The study and practice of medicine, dentistry and pharmacy are based on a variety of disciplines, with major contributions from the biological and physical sciences. However, it is recognised that the social sciences and humanities are also important to an appreciation of the many dimensions of medical practice.

Section I: Reasoning in the Humanities and Social Sciences

The Reasoning in Humanities and Social Sciences section tests skills in the interpretation and understanding of ideas in social and cultural contexts. Different kinds of text are used as stimulus, including passages of personal, imaginative, expository and argumentative writing. Although most of the stimulus materials in this section are in the form of written passages, some units may present ideas and information in visual and tabular form. Materials deal with a range of academic and public issues, with an emphasis on socio-cultural, personal and interpersonal topics.

Questions in the Reasoning in Humanities and Social Sciences section demand varying degrees of complex verbal processing and conceptual thinking, logical and plausible reasoning, and objective and subjective thinking.

Questions that emphasise *understanding* involve the recognition of explicit and implicit meanings through close reading of words and phrases and global interpretations of text.

Questions that emphasise *plausible reasoning* involve interrelating, elaborating and extending concepts and ideas, and drawing conclusions.

Questions that emphasise *critical thinking* require candidates to make discriminations and judgments in the realm of plausible reasoning.

Questions in this section are in multiple choice format with four alternative answers from which candidates choose the most appropriate.

Section II: Written Communication

The Written Communication section is a test of the ability to produce and develop ideas in writing. It involves two thirty-minute writing tasks. Each task offers a number of ideas relating to a common theme. The theme will be general rather than specific in nature. The first task deals with socio-cultural issues while the second deals with more personal and social issues. In selecting topics for the writing tasks every effort is made to minimise factors which might disadvantage candidates from non-English-speaking backgrounds.

Written Communication is assessed on two criteria. These criteria address the quality of the thinking about a topic and the control of language demonstrated in its development. Assessment focuses on the way in which ideas are integrated into a thoughtful response to the task. Control of language (grammatical structure and expression) is an integral component of a good piece of writing. However, it is only assessed insofar as it contributes to the overall effectiveness of the response to the task and not in isolation. Candidates are not assessed on the 'correctness' of the ideas or attitudes they display.

CRITERIA FOR THE ASSESSMENT OF WRITTEN COMMUNICATION

Raters consider the following issues:

Thought and Content

(the quality of what is said)

- what is made of and developed from the task
- the kinds of thought and feeling offered in response to the task

Organisation and Expression

(the quality of the structure developed and the language used)

- the shape and form of the piece
- the effectiveness and fluency of the language

Each piece of writing will be assessed by three independent raters.

Section III: Reasoning in Biological and Physical Sciences

In addition to testing reasoning and problem solving within a scientific context, this section examines the recall and understanding of basic science concepts. The skills assessed include the ability to identify knowledge in new contexts, analyse and interpret data, discover relationships, translate knowledge from one form to another, formulate and apply hypotheses and make generalisations; deduce consequences from models, follow and evaluate a line of reasoning, evaluate evidence, categorise and select information relevant to problems, generate and apply strategies to solve problems, make comparisons, extrapolate, interpolate, estimate and recognise limits in accuracy. Stimulus material is presented in a variety of formats including text, mathematical, graphs, tables and diagrams. Section III is made up of questions in three discipline areas in the following proportions:

Chemistry	40%
Biology	40%
Physics	20%

Questions from the three discipline areas are integrated throughout the section and are in multiple choice format, with four alternative answers from which candidates choose the most appropriate.

Questions in this section do not specifically require the use of a calculator. However, you may, if you wish, take a non-programmable calculator of your own to the test centre for use in Section III only.

The level of subject knowledge required for the Reasoning in Biological and Physical Sciences section of the test generally corresponds to the first year of university studies in biology and chemistry, and Year 12 in physics. The test focuses primarily on problem solving and on the use of knowledge that will be presumed at the beginning of the medical or dental program: that is, a basic understanding of biology, chemistry (organic and physical) and physics. A student who has mastered these general concepts should have adequate knowledge to answer questions in this section.

2.3 Equity and Fairness

GAMSAT is developed to rigorous professional and technical standards. Test questions are designed and developed by a team of ACER writers, expert in their subject areas, in close consultation with university faculty specialists. All test questions must pass detailed panelling, trial testing, analysis and final review. The content, style, duration and sequencing of the tests are determined to ensure that the testing program is relevant, fair, valid and reliable.

GAMSAT test data are subjected to statistical analysis to check that each question has performed as required. Test questions in development are carefully scrutinised in an ongoing attempt to minimise gender, ethnic or religious bias, and to ensure that the test is culturally fair.

The test may contain a small number of trial questions which will not be scored.

The GAMSAT Policy Committee has established an Ethics Committee to examine and report on any ethical issues relating to the content and conduct of GAMSAT referred to it.

2.4 Use of Personal Information

ACER will not disclose personal information collected for the purposes of GAMSAT to any third party other than the participating universities.

GAMSAT candidates sign a statement acknowledging that their test results may be used by relevant authorities for research purposes. Candidates are assured that any use of their registration and test records will be treated with the utmost confidentiality. Candidate names will be separated from data in the reporting of any research undertaken.

ACER's policy on the collection, access to, and use of personal information can be found at www.acer.edu.au

Registering for GAMSAT

3.1 Test Date and Registration Deadline

The test will be held on:

Saturday 26 March 2011

This date will be the only opportunity to sit GAMSAT in 2011.

Registrations close:

5.00pm AEDT Wednesday 2 February 2011

Late registrations will be accepted up to **5.00pm AEDT Friday 11 February 2011**, on payment of a late fee of \$100 in addition to the registration fee.

3.2 Test Centres

There is a GAMSAT testing centre in each of the capital cities of Australia, and one in Townsville. The New Zealand test centre is in Wellington. When completing the registration form, select the city which is most convenient to you. You should plan your travel carefully so that you arrive at the test centre no later than 8.15 am local time. **Additional test centres will not be established.**

A small number of overseas testing centres are provided to cater for international candidates and Australian citizens/residents living overseas. These centres are in London, Singapore and Washington DC. An overseas testing levy of \$185 applies for these centres, in addition to the registration fee. Additional overseas testing centres will not be established.

The test is held on the same date at all test centres.

3.3 Registration

Registration is available online only, via the website **www.gamsat.acer.edu.au**. To register you will need a computer with internet access, a credit card and an email address. This email address will be used for all communication from the GAMSAT Office at ACER, including information on how to access your Admission Ticket and GAMSAT results.

Note: candidates who provide an email address that is hosted by Hotmail.com or Yahoo.com are advised that some procedures implemented by these providers may result in some email messages not being accepted, or being flagged as spam. You are advised to use a different email service provider for the purposes of GAMSAT registration, or to put gamsat@acer.edu.au in your address book to ensure emails from the GAMSAT Office are not regarded as junk email.

ACER and the GAMSAT Consortium reserve the right to refuse or cancel a registration under certain circumstances.

3.4 Payment

The fee to sit GAMSAT is \$374 (including GST). When you register online you also pay online by credit card (Mastercard, AMEX, Diners or Visa, including Visa and Mastercard debit cards).

The online payment option operates through ACER's e-commerce facility via the ACER website. Credit card details are not recorded or stored by ACER but are encrypted at point of capture and transmitted direct to the bank, without entering ACER information systems. Thus you can be assured this is a safe payment option.

3.5 Applying for Special Testing Conditions

If you have a visual, hearing, physical or other disability which might interfere with your ability to sit the test in the standard manner, you should submit a statement to this effect by no later than **5.00pm AEDT Wednesday 2 February 2011**. Requests must be accompanied by an explanatory letter, no more than one year old, from a registered health practitioner. The letters from you and your practitioner must give clear information on your condition as it affects your ability to sit GAMSAT. All reasonable efforts will be made to provide appropriate testing conditions for your needs.

If you are unable to sit the test during daylight hours on a Saturday for religious reasons, please notify ACER in writing by **Wednesday 2 February 2011**, enclosing a supporting letter from your minister of religion. Alternative testing arrangements will be provided for approved candidates. No other special consideration is available.

3.6 Refund Policy

GAMSAT fees will be refunded on request up to 5.00pm AEDT 11 February 2011.

Should you decide that you do not wish to sit the test in 2011, you may apply to transfer your registration to 2012. Such applications must reach the GAMSAT Office in writing (email is acceptable) by no later than **5.00pm AEDT 11 February 2011**. There is no possibility of transfer after this date.

The administrative charge for withdrawing with a refund is \$70. The charge to transfer registration is \$60.

Candidates may transfer their test date once only. Candidates who have transferred registration may not apply for a refund in the following year. There is no penalty, other than the loss of your fee, if you register for the test but do not sit. Preparation materials will only be refunded where they are shown to be defective or damaged during delivery.

3.7 Communicating with the GAMSAT Office

If you have any queries about the registration process, you may contact the GAMSAT Office during normal business hours. The Office will not answer queries relating to the content of the test.

ACER will process applications for admission to graduate-entry medicine and to the University of Sydney pharmacy through the Graduate Medical Admissions Centre, and to the University of Sydney and the University of Melbourne dentistry through the Graduate Dental Admissions Centre. Applications for entry to graduate-entry optometry at the University of Melbourne are processed by the University of Melbourne.

GAMSAT Office at ACER:

Email: gamsat@acer.edu.au
Web: www.gamsat.acer.edu.au
Phone: (03) 8508 9097

Postal address: Private Bag 55
Camberwell VIC 3124

Email is the principal means of communication concerning GAMSAT registration, Admission Tickets and results. Candidates must provide a current valid email address which will be maintained during the registration, test and reporting cycle.

Sometimes personal emails don't make it through our spam filters, so if we don't respond within a week, please resend the message.

Test Centre Procedures and Regulations

4.1 Admission Ticket

You will receive an Admission Ticket approximately two weeks before the test date. Notification will be emailed to your nominated account, so you are advised to add **gamsat@acer.edu.au** to your address book prior to registering.

The Admission Ticket will tell you exactly where and at what time to report on the day of the test. It will also contain your personal details. This ticket is your permission to attend the test centre and a printout must be taken with you on the day. If you present without an Admission Ticket you will be refused entry. Please check it carefully and contact the GAMSAT Office immediately if there are any errors.

Do not print your Admission Ticket on recycled paper: there should not be any other marks on your Admission Ticket. You may not write on your Admission Ticket during the test.

If you have not received your Admission Ticket by **18 March 2011**, you should contact the GAMSAT Office. Check your junkmail folder to ensure the message from the GAMSAT Office has not been treated as spam.

4.2 Reporting to the Test Centre

You will be assigned to a test centre in your chosen city. You must report to this centre at the time designated on your Admission Ticket. This will normally be 8.15 am local time. The test itself will start approximately half an hour later, depending on the amount of time necessary for pre-testing procedures. If you report to the centre after all candidates have been seated in the testing room you may not be admitted. No latecomers can be admitted once the test has started.

When you report to the test centre you must bring with you your Admission Ticket, identity document and writing equipment (medium soft No. 2 or HB pencils and a good quality eraser for the machine scorable sections of the test, and a blue or black pen for the Written Communication test).

4.3 Identification on the Test Day

On the day of the test you will be required to show either

- a valid passport
- or
- a current, **photo-bearing** driver's licence (learners permit, probationary or full licence).

The photograph in your identity document must be recognisable as a likeness of you as you are today. No other form of identification will be acceptable. If you do not have one of these forms of identification, please email the GAMSAT Office for advice **at least two weeks before the test date**.

Photocopies are not acceptable.

If you do not present one of the above identification documents, together with your Admission Ticket, you will not be able to sit GAMSAT.

4.4 Permitted Testing Aids

A **non-programmable calculator** is permitted, though not essential, for use in Section III only.

Candidates whose native language is not English may bring a **printed bilingual** dictionary into the test for use in Section I and Section II only. The pages should be unmarked and all notes removed. Any candidate taking up this option must submit the dictionary to the Supervisor for inspection before the test begins.

Note:

Mobile phones, pagers, stopwatches, audio or recording devices of any kind including MP3 players, papers, food and bags will not be permitted in the test room. English–English dictionaries are not permitted. Pencil cases, highlighters and rulers are not permitted.

You may bring a bottle of drinking water into the test centre with you.

4.5 Timing and Order of the Tests

A full day is needed to sit GAMSAT. This is made up of five and a half ($5\frac{1}{2}$) hours of testing time and one hour of recess time.

The following table shows the structure of GAMSAT by section and time.

	Number of questions	Time in minutes
Section I		
Reasoning in Humanities and Social Sciences	75	100
Section II		
Written Communication	2	60
Section III		
Reasoning in Biological and Physical Sciences	110	170

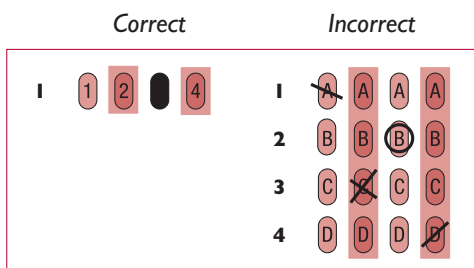
There will be a lunch break of one hour between Section II and Section III. There is no break between Sections I and II. Candidates may not leave the test room or access their personal belongings at this time.

Ten minutes reading time will be given for Sections I and III and five minutes for Section II.

Please note: there may not be canteen facilities at the test centres. You are advised to bring lunch. GAMSAT is a high stakes test administered under secure test conditions. Candidates may not leave the test centre before the full testing time has elapsed, except in the case of illness. Once a candidate has departed the test centre it is not possible to re-enter and continue the test.

4.6 Answer Sheets

The GAMSAT answer sheets for Sections I and III are optically scanned and scored by machine. It is very important that you record your answers carefully. Record your answers by completely filling in the oval with pencil. If you decide to change an answer, erase your mark completely and mark the oval corresponding to your new choice.



Mark your answers directly onto the GAMSAT answer sheet and not in the test book.

Any rough work may be done in the margins of your test book. Scrap paper is not allowed. Do not write on your Admission Ticket.

4.7 Penalties for Unethical Behaviour

GAMSAT is a high stakes test; that is, the results of the test have the potential to make a major impact on the future career of the test taker. For this reason the GAMSAT Office, in conjunction with the graduate-entry schools, has established security procedures which will be strictly enforced at all times.

The giving of false or misleading information during the registration process, and any unethical behaviour during the test itself, will be viewed as serious breaches of GAMSAT ethical standards and will attract serious penalties.

Any candidates found guilty of unethical behaviour will automatically have their GAMSAT scores cancelled and may be prohibited from applying to sit GAMSAT on a future occasion.

Practices which constitute unethical behaviour include:

- impersonation
- attempting to remove a test book or answer sheet or part thereof, or any notes, from the testing room
- failure to follow test supervisor's instructions at all times
- giving or receiving assistance during the test
- creating a disturbance
- using prohibited aids (e.g. notes, note paper, mobile phone, audio/recording device, etc.)
- writing, or marking your test paper or answer sheet, during reading time or after the instruction is given to stop writing
- copying another candidate's work
- using or passing on information about test questions to a third party for the purpose of your own or the third party's personal or commercial gain.

4.8 Breaches of copyright

Candidates are advised that GAMSAT is copyright material that is owned by the GAMSAT Consortium. In addition to any penalty imposed for unethical behaviour arising from a candidate using or passing on information about test questions to third party for the purpose of the candidate's or a third party's personal or commercial gain, a candidate, or a person acting

Preparing for GAMSAT

on a candidate's behalf, who infringes or misuses the GAMSAT Consortium's intellectual property rights in GAMSAT may be subject to legal action.

The purpose of GAMSAT is to assess your ability to understand and analyse written and graphically presented material. GAMSAT measures skills and knowledge acquired over a long period of time, as well as the ability to reason, make logical deductions and form judgments. There would therefore be little benefit to be gained from last-minute 'cramming'. However, for non-science graduates some specific preparation covering relevant basic sciences to first year university level is highly recommended (see page 5). Some candidates may wish to enrol in a short tertiary level science course to ensure adequate preparation.

Please note: Neither the GAMSAT Office nor the graduate-entry schools recommend or endorse any particular texts or preparation courses. Nor do they support any commercially available preparation courses or have any association with commercial courses.

5.1 GAMSAT Practice Materials

ACER produces the only official GAMSAT preparation materials. There are currently four publications available.

The *Sample Questions* and *Practice Questions* each contain practice materials equivalent to approximately half a full test and with the same balance of question types. Answers are given for all questions and suggested worked solutions are provided for some. The questions should take between 2 and 2 ½ hours to complete if worked through under test conditions. The *Practice Test* and *Practice Test 2* are equivalent to a full test and will take approximately 5 ½ hours to complete under exam conditions. Answers to all the multiple choice questions are provided at the end of the books. Though similar in format, they contain different selections of material and are designed to give examples of the types of question, skills and knowledge contained in GAMSAT. These materials can be ordered via the GAMSAT website www.gamsat.acer.edu.

at a cost of \$27 each (*Sample Questions* and *Practice Questions*) or \$45 each (*Practice Test* and *Practice Test 2*), plus postage.

It is advisable to work through the materials in the *Sample Questions*, *Practice Questions*, *Practice Test* and/or *Practice Test 2* booklets to gauge the level of complexity and the type of questions asked. Do this exercise under test conditions using the same timing as you would be allowed in the real test (ie. pace yourself to answer approximately 20 questions in 30 minutes).

Self-analysis of your performance on these materials will give you an indication of your strengths and weaknesses and be a guide to further preparation.

5.2 Test-taking Strategy for Sections I and III

Work steadily through the test. It is not advisable to spend too much time on any one question. If you think you know the answer to a question, mark it, even if you are not certain. Go on to the next question and come back later if you have time. No credit is given if more than one answer is marked. No marks are deducted for a wrong answer. All questions have the same value, therefore by attempting as many questions as possible you stand the best chance of maximising your score. Questions are in multiple choice format. It will be advantageous for you to develop your own strategies for answering this type of question.

Mark your answers directly onto the GAMSAT answer sheet and not in the test book.

Any rough work may be done in the margins of your test book. Scrap paper is not allowed.



GAMSAT Results

6.1 The GAMSAT Scores

You will receive a score for each of the three Sections, together with an Overall GAMSAT Score. The Overall Score is a weighted average of the three component scores.

Each of the four GAMSAT scores is expressed on a scale of 0 to 100. These are not percentage marks.

The Overall GAMSAT Score is calculated using the following formula:

$$\text{Overall Score} = (1 \times \text{Section I} + 1 \times \text{Section II} + 2 \times \text{Section III}) \div 4.$$

Please Note: The Overall Score is calculated to several decimal places. It is not possible for candidates to replicate this process.

To assist you in evaluating your test performance your scores will be accompanied by a chart enabling you to calculate an approximate percentile ranking for your Overall Score.

The universities will set their own cut-off scores from year to year. These will be the minimum scores acceptable for consideration in the graduate-entry medical, dental, pharmacy and optometry school admissions processes. The schools may also choose to use the scores in other ways.

Scores are scaled by ACER to make them directly comparable from year to year.

Candidates will not be provided with any additional information on scores or the scoring process. All information remains the property of GAMSAT and no right of inspection will be deemed to be vested in a candidate.

6.2 Validity of Results

GAMSAT scores are valid for two consecutive years. This means that candidates may apply for admission to the graduate-entry schools up to two years after the date on which they sit the test. For example, results from GAMSAT 2011 will be valid for application to a graduate-entry medical, dental, pharmacy or optometry program commencing in 2012 and/or 2013, but not in 2014. There is no restriction on the number of times a candidate may sit GAMSAT.

Valid scores from GAMSAT UK and GAMSAT Ireland may also be used to apply to the Australian graduate-entry programs. Please note that scores are valid for the 2 years at the time of application.

If you have two valid GAMSAT scores, you may use whichever you prefer in applying for admission to medical, dental, pharmacy or optometry school. The University Admissions Committees will not have access to your GAMSAT scores from other years.

In making your decision you should bear in mind that the Admissions Committees may set thresholds for the Section scores as well as for Overall Scores. If you are uncertain which score to use on your application, you may wish to contact your preferred schools for advice.

6.3 Appeals

The GAMSAT Office will not enter into appeals against GAMSAT results. Requests for re-marking will not be considered. Should you wish to query a particular question on the day of the test, you should alert the supervisor to your concern and submit a written note before you leave the test centre. Your query will be reviewed by the GAMSAT Office and you will be notified of the outcome. If necessary your correspondence will be forwarded to the GAMSAT Ethics Committee. Similarly, any complaints relating to the testing venue or physical discomfort suffered should be reported to the supervisor on the day, or in writing to the GAMSAT Office **within seven days of the test administration.**

It is not possible to give special consideration for impaired performance on the day of the test caused by illness or other unexpected personal situations.

7 Application for admission to the Programs

The process of applying for admission to the graduate-entry programs is separate from the process of registering to sit GAMSAT, and takes place later.

There are two separate steps in the process of application to graduate-entry medicine:

First step – March 2011

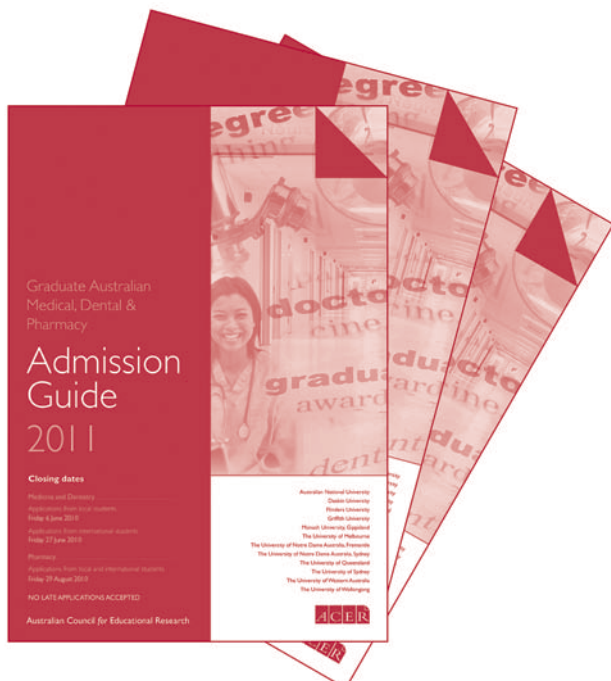
Sit GAMSAT

Second step – May 2011

Submit application to ACER

GAMSAT candidates are responsible for determining their eligibility to apply for admission to the graduate-entry programs.

ACER will process applications for admission to graduate-entry medicine and to the University of Sydney pharmacy through the Graduate Medical Admissions Centre, and to the University of Sydney and the University of Melbourne dentistry through the Graduate Dental Admissions Centre. Applications for entry to graduate-entry optometry at the University of Melbourne are processed by the University of Melbourne



The *Graduate Admission Guide* will be available on the website from early May 2011. The *Guide* contains all information necessary to apply for the graduate-entry medical programs. Additional information on application to the graduate-entry dental schools at the University of Sydney and the University of Melbourne as well as the Master of Pharmacy at the University of Sydney is also provided.

TIMELINE FOR ADMISSION TO A GRADUATE-ENTRY PROGRAM IN 2012:

October 2010 – 5.00pm AEDT 2 February 2011

- register for GAMSAT

26 March 2011

- GAMSAT test day

early May 2011

- applications open to graduate-entry medical, dental and pharmacy programs

mid May 2011

- receive GAMSAT results

Applicants should consult the GAMSAT website and the schools' websites for the relevant admissions cycle deadlines, including those for:

- submission of online application data and hard copy documents to ACER;
- release of interview offers by the schools;
- scheduling of case study scenarios;
- offers of places by the schools.

These dates will be published online as soon as they become available.

It is the individual applicant's responsibility to regularly check the GAMSAT website for updated information.

Candidates are reminded that admission to Medicine and Dentistry is based on the three criteria of Bachelor degree, GAMSAT score, and performance at interview, with the additional requirement of a case study scenario for Pharmacy. **Exception:** The University of Queensland no longer interviews applicants for the graduate program. Dentistry at the University of Melbourne does not require an interview.

GENERAL ENQUIRIES

GAMSAT Office

ACER
Private Bag 55
Camberwell VIC 3124
e: gamsat@acer.edu.au
www.gamsat.acer.edu.au
t: (03) 8508 9097

COURSE-SPECIFIC ENQUIRIES

Australian National University

Medical School
e: medadmissions@anu.edu.au
<http://medicalschool.anu.edu.au/>
t: (02) 6125 1304
f: (02) 6125 3622

Deakin University

School of Medicine
e: hmnbs-support@deakin.edu.au
www.deakin.edu.au/hmnbs/medicine
t: (03) 9251 7777
f: (03) 9251 7450

Flinders University

Faculty of Health Sciences
e: medadmissions@flinders.edu.au
www.flinders.edu.au/gemp
t: (08) 8201 2421
f: (08) 8201 3905

Griffith University

Centre for Medicine and Oral Health
e: medicine@griffith.edu.au
www.griffith.edu.au/medicine
t: (07) 5678 0704
f: (07) 5678 0303

The University of Melbourne

Medicine

Melbourne Medical School
Online enquiry: www.medicine.unimelb.edu.au/future/doctorofmedicine.html
t: (03) 8344 5890
f: (03) 9347 7084

Dentistry

Melbourne Dental School
Online enquiry: www.dent.unimelb.edu.au/dsweb/future_students/dds/index.html
t: (03) 8344 5890
f: (03) 9347 7084

Optometry

Melbourne Graduate School of Science
Online enquiry: <http://graduate.science.unimelb.edu.au/programs/optometry.php>
t: (03) 8344 6128
f: (03) 8344 3351

Monash University

Faculty of Medicine, Nursing and Health Sciences
e: gippslandmed@monash.edu
www.med.monash.edu.au/medical/gippsland
t: (03) 5122 6445
f: (03) 5122 6841

The University of Notre Dame Australia

Fremantle School of Medicine
e: future@nd.edu.au
www.nd.edu.au
t: (08) 9433 0533
f: (08) 9433 0544

The University of Notre Dame Australia

Sydney School of Medicine
e: sydney@nd.edu.au
www.sydney.nd.edu.au
t: (02) 8204 4404
f: (02) 8204 4422

The University of Queensland

School of Medicine
e: admissions@som.uq.edu.au
www.som.uq.edu.au
t: (07) 3365 5278
f: (07) 3365 5433

The University of Sydney

Medicine

Sydney Medical School
e: medicine.admissions@sydney.edu.au
sydney.edu.au/medicine/future-students
t: (02) 9351 3132
f: (02) 9351 3196

Dentistry

Faculty of Dentistry
e: admissions@dentistry.usyd.edu.au
www.dentistry.usyd.edu.au
t: (02) 9351 8308
f: (02) 9351 8333

Pharmacy

Faculty of Pharmacy
e: pharmacy.pg@sydney.edu.au
www.sydney.edu.au/pharmacy
t: (02) 9036 9552
f: (02) 9351 4391

The University of Western Australia

Faculty of Medicine, Dentistry and Health Sciences
e: medinfo@meddent.uwa.edu.au
<http://admissions.meddent.uwa.edu.au>
t: (08) 9449 5176 / 5180
f: (08) 9384 6238

The University of Wollongong

Graduate School of Medicine
e: uniadvice@uow.edu.au
www.uow.edu.au/gsm
t: 1300 367 869 (within Australia)
t: +61 2 4221 3218 (international)